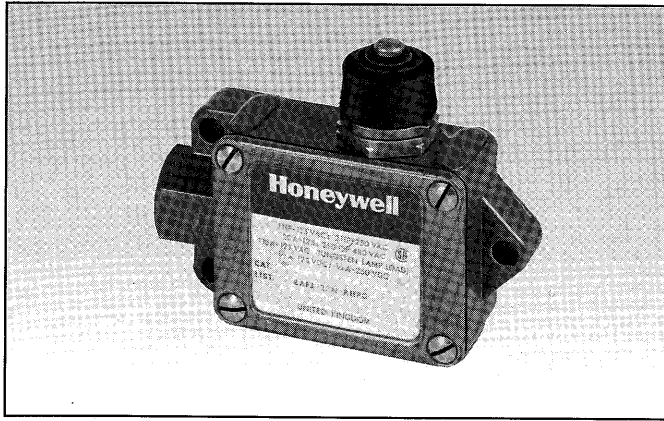


Series F3 High Capacity Housed Switches



Features

- High inrush current
- High electrical rating
- Precision switching
- Rugged construction
- Splash proof - IP65
- Wide operating temperature range : - 10 to +70°C
- Switch mounting and wire connection are easily made
- Basic switch replaced without disturbing switch mounting
- R.H. or L.H. mounting available
- Conduit thread choice available
- Special listings available, upon request, with operating temperature range of - 30 to +70°C
- Telescopic and reset versions

Description

This series of enclosed limit switches is designed for industrial applications and offers long life, precision switching and the capacity to make and break steady state currents of 20 amps and switch inrush currents as high as 75 amps. The basic switch is enclosed in a rugged aluminium die cast housing.

The elastomer seal and the cover seal protect the actuating mechanism and the internal basic switch from contaminants. Wiring and basic switch replacement is easily done by removing the cover. The switch housing does not need to be removed from the mounting.

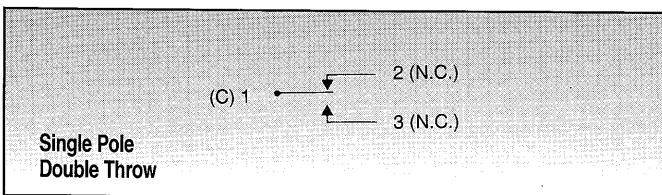
Construction

The F series switches are housed in a ruggedly constructed aluminium die cast body with a single entry conduit thread.

A choice of conduit threads is available. Boot seals are provided to protect against oil and water to IP65. The front cover can be removed to wire or replace the basic switch without disturbing the switch mounting.

The basic switch has a high electrical rating with SPDT circuitry.

Circuitry



Technical Data

Mechanical

Temperature range	- 10 to +70°C
Protection class	IP65
Conduit thread	20 mm or PG 13,5 or PG 11
Mechanical life	10 × 10 ⁶ operations

Electrical

Rated	20 A at 125, 250 or 480 V ac
	1 HP at 125 V ac
	2 HP at 250 V ac
	1/2 A at 125 V dc
	1/4 A at 250 V dc

Right hand or left hand fixing

The F type switches are designed for either right hand (RH) or left hand (LH) mounting. The only difference between the designs is the location of the plunger.

Conduit Thread

Listings ending in "C" specify a 20 mm thread.

Listings ending in "PG" specify a PG 13,5 mm thread.

To order a PG 11 thread, change the letters "PG" to "PG 11" eg BAF3-2RN-RHPG11.

Replacement Parts

Actuators

Actuator Assembly	Part Number
Pin Plunger	923 PA3
Roller Arm	923 PA5
Telescopic	923 PA1

Replacement actuator assemblies include actuator, boot seal, c-ring lock ring and spring.

Basic Switch

Switch Type	Part Number
BAF3-2RN types	BA2RP1
BAF3-2RN2 types	BA2RP1
BAF3-2RN18 types	BA2RP1
BAF3-3RNC1 types	BA3RX717

To specify the mounting required insert RH or LH in the switch listing before the conduit designation, e.g. BAF3-2RN2-RHC.



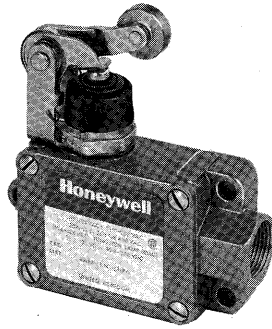
Distributor:

Eblinger Elektronik GmbH
Lange Wanne 25
38259 Salzgitter

Telefon: 05341 / 8212-1
Fax: 05341 / 8212-99

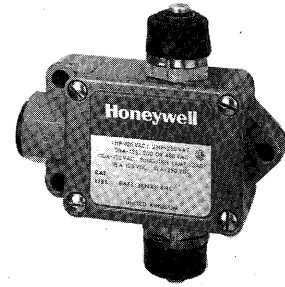
e-mail: mail@elblinger-elektronik.de
Internet: www.elblinger-elektronik.de

Adjustable actuators



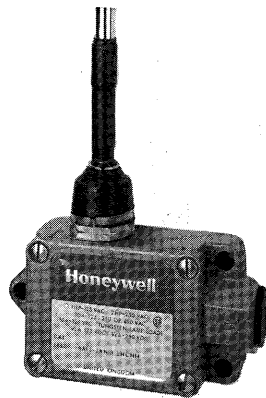
Roller lever type actuators may be re-adjusted horizontally to any position through 360°

Reset Plunger



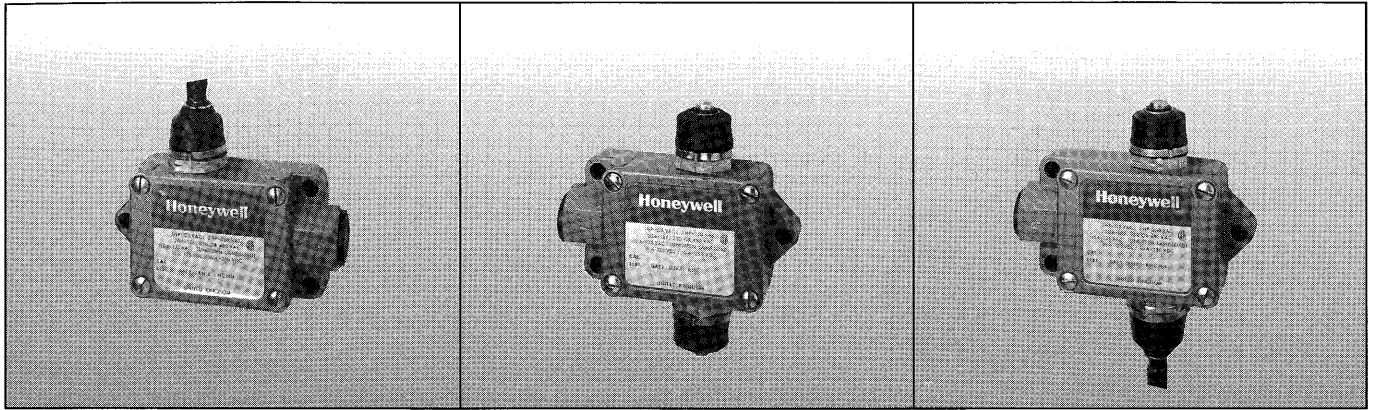
BAF3-3RNX1 versions feature a reset plunger positioned directly opposite the actuating plunger. Once the switch has been actuated (i.e. is the normally open position) it will remain in this state until the reset plunger is pressed when the switch will snap back to the normally closed position. A force of 790 g max. is required to operate the reset plunger.

Telescopic Actuator



The telescopic actuator has a maximum diameter of 7,9 mm and a closed length of 198 mm (w.r.t. mounting holes).

It will extend to any desired length up to 711 mm (w.r.t. mounting holes).



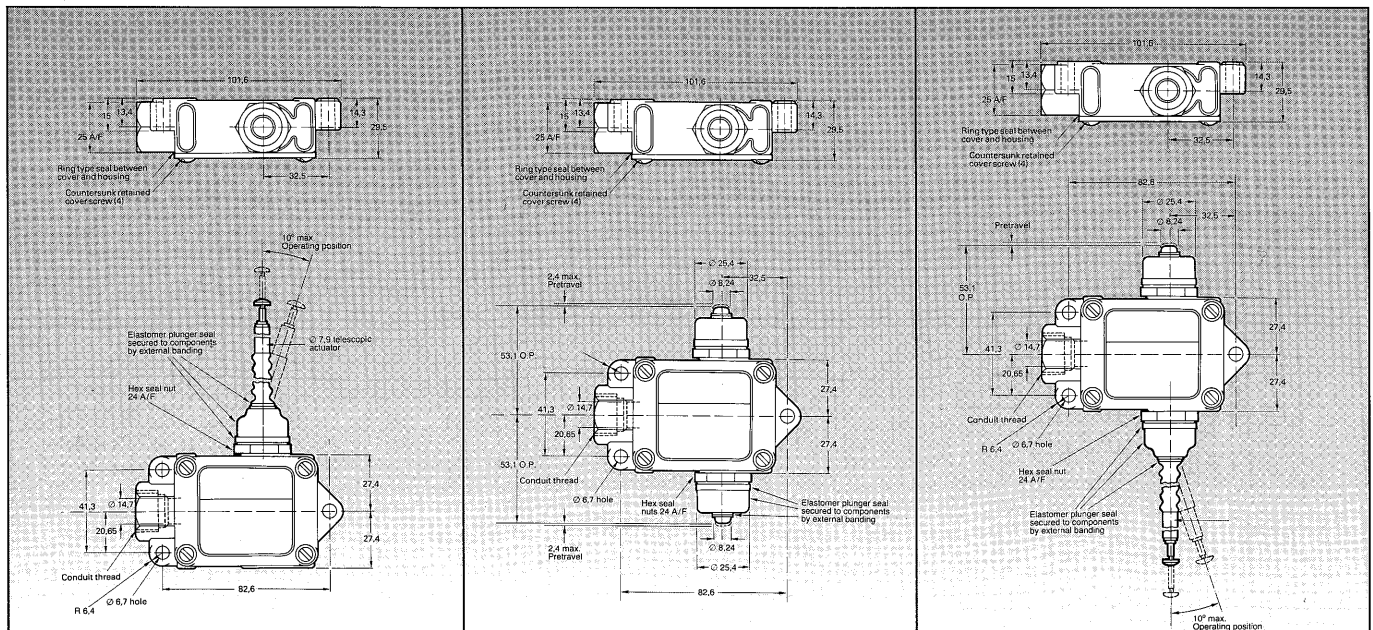
BAF3-2RN18-RHCN14	BAF3-2RN18-LHCN14	BAF3-3RN1-RHC	BAF3-3RN1-LHC	BAF3-3RN1-RHCN14	BAF3-3RN1-LHCN14
BAF3-2RN18-RHPGN14	BAF3-2RN18-LHPGN14	BAF3-3RN1-RHPG	BAF3-3RN1-LHPG	BAF3-3RN1-RHPGN14	BAF3-3RN1-LHPGN14

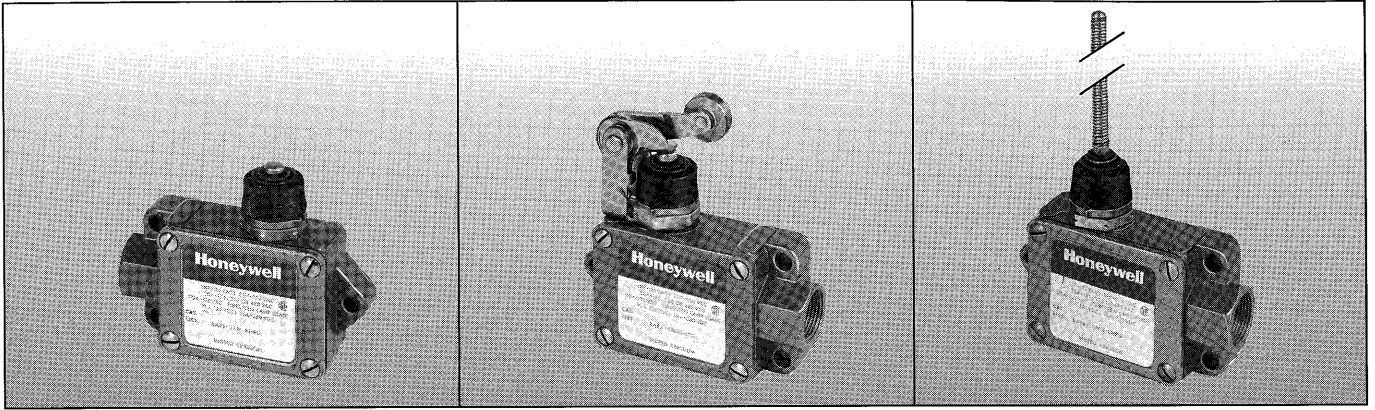
Right hand.	Left hand.	Right hand.	Left hand.	Right hand.	Left hand.
Telescopic actuator.	Telescopic actuator.	Pin plunger.	Pin plunger.	Telescopic actuator.	Telescopic actuator.
Elastomer boot seals.	Elastomer boot seals.	Elastomer boot seals.	Elastomer boot seals.	Elastomer boot seals.	Elastomer boot seals.
		Reset plunger.	Reset plunger.	Reset plunger.	Reset plunger.

--	--	--	--	--	--

--	--	--	--	--	--

		0,79 kg max.	0,79 kg max.		
10° max.	10° max.			10° max.	10° max.





BAF3-2RN-RHC	BAF3-2RN-LHC	BAF3-2RN2-RHC	BAF3-2RN2-LHC	BAF3-2RN18-RHC	BAF3-2RN18-LHC
BAF3-2RN-RHPG	BAF3-2RN-LHPG	BAF3-2RN2-RHPG	BAF3-2RN2-LHPG	BAF3-2RN18-RHPG	BAF3-2RN18-LHPG

Right hand.	Left hand.	Right hand.	Left hand.	Right hand.	Left hand.
Pin plunger actuator.	Pin plunger actuator.	Roller arm actuator.	Roller arm actuator.	Coil spring actuator.	Coil spring actuator.
Elastomer boot seal.	Elastomer boot seal.	Elastomer boot seal.	Elastomer boot seal.	Elastomer boot seal.	Elastomer boot seal.

1,13 kg max.	1,13 kg max.	0,9 kg max.	0,9 kg max.	—	—
230 g min.	230 g min.	230 g min.	230 g min.	—	—
2,4 mm max.	2,4 mm max.	5,6 mm max.	5,6 mm max.	15° max.	15° max.
0,25 mm max.	0,25 mm max.	0,5 mm max.	0,5 mm max.	—	—
5,56 mm min.	5,56 mm min.	6,35 mm min.	6,35 mm min.	—	—

